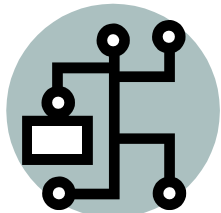




## What We Are Looking For in a Business...

- Able and willing to communicate with the UF SIFE team for the entire semester
- In need of some fresh ideas from a talented team
- Open to new ideas and innovative solutions
- Any and all businesses welcome—established, new, non-profit
- Locally owned and operated



Contact us soon, we have limited spots and they fill up quickly!



## A Little Bit About UF SIFE...

- UF Chapter of Students in Free Enterprise—an international, non-profit organization
- Established locally in 1999
- Overall role is to develop and implement community outreach projects in conjunction with the SIFE pillars:
  - Market Economics
  - Success Skills
  - Entrepreneurship
  - Financial Literacy
  - Business Ethics
- Visit [www.ufsife.com](http://www.ufsife.com) for more information



### University of Florida Students in Free Enterprise Small Business Consulting

School of Business  
Warrington College of Business Administration  
University of Florida  
232 Bryan Hall, PO Box 117160  
Gainesville, FL 32611

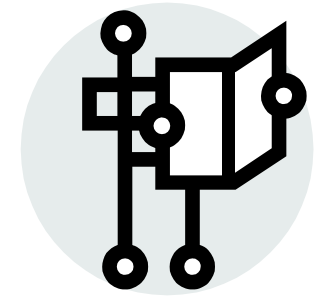
Phone: 352-273-0165  
Fax: 352-392-1279  
E-mail: [joshua.funderburke@cba.ufl.edu](mailto:joshua.funderburke@cba.ufl.edu)



UNIVERSITY OF FLORIDA



## Small Business Consulting Program

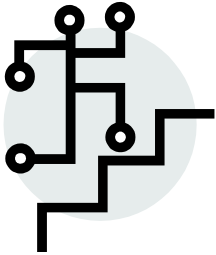


*Assisting local business owners since 2001*

For more information, visit [www.ufsife.com](http://www.ufsife.com)



## What We Have to Offer...



Helping local businesses rise above their competition

The UF SIFE Small Business Consulting program brings together local entrepreneurs and teams of UF SIFE students in an effort to improve local businesses. The teams are made up of 4-6 students, with a variety of majors and skills. In addition, each team is headed by a team captain who acts

as the main liaison between the team and the entrepreneur. Many entrepreneurs we have worked with in the past have found it extremely valuable to work with a group of students to gain some insight about how to reach out to the college-student market.

This community outreach program offers an opportunity for the student teams to apply the knowledge they've gained in the classroom in a real world hands-on setting. The deliverables that the teams complete by the end of the semester are well-researched, comprehensive, and specialized for each business. The relationship between the business owner and team is one that should be mutually beneficial and requires cooperative two-way communication. By the time the team presents their findings at the end of the semester, both parties should come away with some added value.

Recently, our teams have had great success in working with some local businesses including:

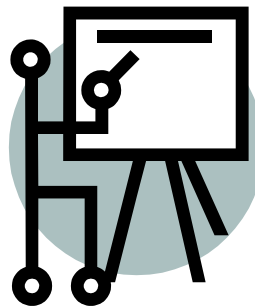
- helping a local entrepreneur open a specialty retail store by developing a comprehensive marketing plan;
- assisting in the development of a business plan for a local non-profit venture.

*"I've had students participate in helping me with a marketing plan, they helped with the financial strengths and weaknesses in the business, and they basically made sure that my business started and has been as successful as it is. I am very proud to say that the experience that I had with the team has been outstanding, and I don't think I could be where I am without their help."*

- **Ericka Jackson, Owner God Mommy's Shop**

## What We Don't Offer...

The teams of UF SIFE students are not specifically trained in web design so, unfortunately, we do not offer free web design and maintenance. In addition, the teams are not going to act as 'free labor' to pass out fliers, complete data entry, conduct administrative tasks, etc. The students on the teams are looking to make a real and tangible difference in the life and business of a local entrepreneur.



Formal presentation of our findings at the end of the semester

## How To Get Involved...

We typically begin working with businesses at the beginning of the fall and spring semesters (early September and early January). However, we prefer to have our businesses chosen before the semester starts so that we can begin as soon as possible once we assemble the teams.

To inquire about getting your business involved with the UF SIFE Small Business Consulting program, send an email to the University of Florida SIFE faculty advisor at [joshua.funderburke@cba.ufl.edu](mailto:joshua.funderburke@cba.ufl.edu).

To find out more about the UF SIFE program, visit our website at [www.ufsife.com](http://www.ufsife.com).



### University of Florida Students in Free Enterprise Small Business Consulting

School of Business  
Warrington College of Business Administration  
University of Florida  
232 Bryan Hall, PO Box 117160  
Gainesville, FL 32611

Phone: 352-273-0165  
Fax: 352-392-1279  
E-mail: [joshua.funderburke@cba.ufl.edu](mailto:joshua.funderburke@cba.ufl.edu)